

CASTLEDARE MINIATURE RAILWAYS

W.A. (INC)
www.castledare.com.au

MAY 2012

ISSUE NO: 308

Castledare Miniature Railway
P.O Box 337
Bentley, WA 6982

Patron: Dr. M. Lekias

Contact listing for CMR Management Committee members.

All information on this page ratified by Management Committee on 20th April 2012

President:

Craig Belcher - Ph: 9459 6495 Mob: 0417 984 206
Email: craig.belcher@bigpond.com

Vice President:

Chris Doody – Mob: 0404 269 687
Email: factory@westernstainless.com.au

Secretary:

Ken Belcher - Ph: 9375 1223, Fax: 9375 2340
Email: cmr1963@tpg.com.au

Minute Secretary:

John Watson – Ph: 9458 9047

Treasurer:

Tania Watson – Ph: 9479 5045

Committee:

Les Smith – Ph: 9314 6382 Email: ausrail@box.net.au
Victor Jones - Ph: 9527 5875 Email: jonses12@optusnet.com.au
Trish Stuart - Ph: 9295 2866 Email: richard.stuart@bigpond.com
Richard Stuart – Ph: 9295 2866 Email richard.stuart@bigpond.com
Eno Gruszecki - Mob: 0408 908 028

Membership + Licenses: Sue Belcher

Boiler Inspectors:

Richard Stuart - Ph: 9295 2866
Keith Watson- Ph: 9354 2549
Phill Gibbons - Ph: 9390 4390

Qualification Examiners: Steam Locomotives – Keith Watson, Roger Matthews
Diesel Locomotives - Roger Matthews, Craig Belcher
Guards & Safe working – Keith Watson, Trish Stuart
Signals – Mike Crean, Ric Edwards

Track Master: Craig Belcher

Editor of Cinders and Soot:

Trish Stuart – Ph: 9295 2866 (after hours) Email: richard.stuart@bigpond.com
No personal letters will be printed without committee approval

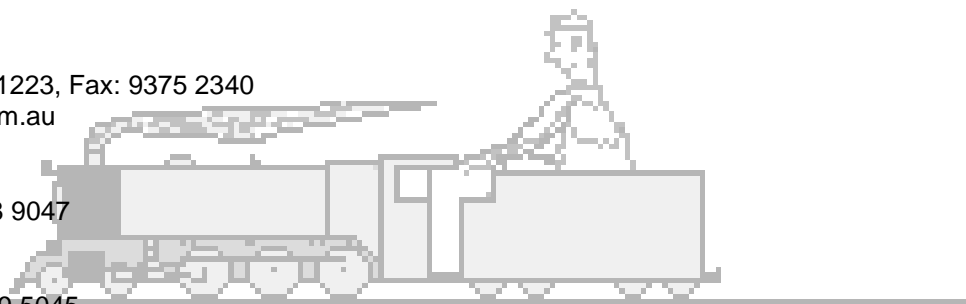
First Aid Officers: Keith Watson, Tania Watson

The Castledare Miniature Railway is sponsored by:

Coal Supplies: The steam locomotives at the Castledare Miniature Railway operate with coal supplied by Premier Coal.

Cover page: Run Day preparation in 1971

Photographer: Photo provided by Les Smith



Castledare Miniature Railways
112 Green St, Bentley W.A 6102

The President's Bit..

Welcome members and friends to my first issue as President of our Railway. I'm still a little undecided as to what to call my spiel each month so, for now, we'll go with the above title, I welcome any better suggestions. ☺

I'd like to begin by first thanking Roger for his leadership over the last 4 years. His way of thinking has shown me for one, that there's more than one way to skin the proverbial cat, and has often been quite thought provoking. With Roger's departure we are left with a gap in the committee and to fill this gap we welcome Les Smith to the committee and look forward to his contribution during his term over the next 2 years.

Work around the railway has been proceeding on a number of fronts, with the track being replaced in the new lower level of the carriage shed and fencing being upgraded around the picnic area. Track work days have seen the Wilson Mainline re-sleeper progressed to be now just 300 sleepers short of being finished, with just the passing loops and secondary tracks to be dealt with, along with the long awaited start of expansion joint replacement. It is very pleasing to see this progress, all towards the future of the club.

Independent information was sought regarding the picnic area lawn; with the result being a trial of seeding with a different type of lawn. It appears that the lawn used is not the best for our shade conditions, hence the issues we have faced. Only time will tell if this new advice proves any better, or else we're back to the drawing board.

Now unfortunately on to something somewhat more negative, some issues have cropped up recently with the Swan River Trust, regarding some projects being carried out around the railway. These issues are being dealt with however it has shown that we need to be more disciplined with our project management in general, ensuring that all relevant approvals are garnered before starting major projects. This could create the appearance of progress slowing down, however with appropriate planning the impact should only be evident on the management side of these projects. Along with this a new 5 year maintenance plan is being drawn up for submission to the trust, encompassing all intended routine tasks around the railway in more detail than we have in the past, as well as an indicator of some of the more major projects that are or may be coming in that period of time. Some of the major points to come from this is that we, as a prominent community based organisation, need to be more responsible and careful in our use of secondhand materials, and storage of such. With this in mind, in the very near future, a concrete recycling bin will be on site for a cleanup and removal of all building rubble waste from the site. This will be followed by a scrap steel bin. Both of these jobs will likely be carried out over a weekend with the bin being delivered on the Friday and picked up on the Monday.

Now for some more good news, the drawings for the replacement boiler on Dennis P Moore are currently being reviewed, with a view for construction to start soon. My thanks to Richard for his design work and also to Geoff Thompson and Roger who have both been involved in this project. The chassis is currently in Geoff's Workshop for a mechanical tune up, and I'm sure it will return a different engine. As has been said before, a lot of small jobs have been done to the loco over time to improve its performance, this should be the icing on the cake (or rather, the coal on the fire?).

As all members will be aware, we have a busy couple of weekends for the club coming very soon. The 27th May is scheduled as a Charity run for the Retinitis Australia group and the following weekend (June long weekend) we have scheduled a general members meeting and railway prep day on Saturday, a running day Sunday, and a running day Monday, along with the AMRA show at Claremont show grounds over all 3 days. Considerable input from the membership will be needed if we are to get through weekends like this, so please come down to the railway and lend a hand.

The Charity run is slated to be a full reverse run operation and as always this does provide something different for us, it would be good to see a turnout of members there to support it.

The general members meeting, while scheduled, will only go ahead if sufficient members are there and want to hold one. As this weekend is such a busy one for the railway, we will need to ensure that as much prep work as possible is done on the Saturday to enable the following run days to progress smoothly. Both Chris and myself, along with several others, will be at Claremont 'banging the drum' so to speak, so hopefully the railway will be quite busy.

Well I think you've probably read enough from me, so until next month, I look forward to seeing you all at the railway, happy steaming (or dieseling as the case may be.. ☺)

Craig Belcher
President, Castledare Miniature Railway



FROM THE SECRETARY'S DESK

Notes from the last Committee Meeting – these are only a brief summary of some of the items discussed.

- Reminder that General members meetings now to be held quarterly – the next being June 2012
- Maroon set to be sent to Thornlie TAFE for repainting (TAFE have now confirmed this project will be happening in the 2nd semester 2012)
- Work on Dependable progressing – in the hands of John Watson and barring anything unforeseen could possibly be completed before the end of the month
- Re-sleeping project nearing completion – member John Palm has undertaken this work in conjunction with the Track master
- 50th Anniversary celebration – preliminary notice now on web site and advertisement to be placed in the AME magazine.
- Sub committee formed to work through matters raised by SRT during recent on-site visit
- Approval to arrange for bins to be on site for removal of scrap steel and concrete rubble – work weekend to be arranged – members will be advised by e-mail when busy bee weekend date is set



DATES FOR THE DIARY:

Month	Day	Date	Event	Times	Canteen	Duty Officer
May	Wednesday	16 th	Work Day	From 9am		
	Friday	18 th	Work Night	From 4pm		
	Sunday	20 th	Public run from Wilson	From 9am		Trish Stuart
	Wednesday	23 rd	Work Day	From 9am		
	Sunday	27th	Public Run from Niana For Retinitis Pigmentosa F/Raising	From 10am		Any and all available members welcome to assist – Please advise Ken Belcher if you are available
	Wednesday	30 th	Work Day	From 9am		
June	Friday	1 st	Set up AMRA exhibition			Contact Chris Doody for further

						information
	Saturday	2 nd	AMRA Exhibition Preparation of the railway & General Meeting	From 10am From 9am		Chris Doody
	Sunday	3 rd	Public run from Niana	From 9am	Judy Bowyer & Sue Belcher	David Lyons & Les Smith
		3 rd	AMRA Exhibition	From 10am		Chris Doody
	Monday	4th	AMRA Exhibition Public Run from Wilson with City of Canning	From 10am 11am - 3pm		Chris Doody Any and all available members welcome to assist
	Sunday	17 th	Public run from Wilson	From 9am		TBA
	Wednesday	20 th	Work Day	From 9am		

Member's days 29th April 2012 – reverse run

If you were down at the recent member's day you wouldn't be alone for having to look twice because the trains in the Niana train station were facing the wrong way! For something different for the first 5th Sunday member's day a reverse run was held. The atmosphere on the day was fantastic and it was almost like experiencing the track for the first time all over again.

Not only was I excited to see the track from a different perspective but I was earnestly awaiting to see if after a few years if Ken & Craig's train would be all fixed and be able to hit the track. I'm please to say that the blue diesel is back in action! Now I can encourage Craig to get a move on with building his own steam train so that I can share the experience with him from the beginning. It was also great to see Don Bowyer's little steamer the "Judi" finally back at Castledare and by the look of the smile on Don's face I think he enjoyed the day with his wife and friends.

Based on the turnout of members on the day I have to think that the day was a success and I look forward to seeing what other surprise awaits the next 5th Sunday members day in July. Nothing is better than coming down on member's day and sharing a few laughs with our fellow members and remembering why we are all here, our love of all things trains. Hope to see you at the next one!

Damelsa Belcher







And the planning is continuing towards October 2013 !

WILL YOU HELP ???

It is planned to produce a DVD depicting the club's history and this is where you, the members, can assist. Do you have any photos, video, film, etc. taken over any of the previous 48 ½ years the club has been operational ??? If the answer is yes, are you prepared to make a copy and allow it/them to be included in the DVD ???



Ideally, any photos, etc. should include a brief but explanatory description of the location and also, an idea of the date the image was taken. Acknowledgement will be given to the owner/s of private photos as part of the DVD.

This project can only be achieved with your help – can you and will you assist preserve the club's history ??? Obviously the more material that is made available, the better the DVD can be. If you are able to contribute, please contact me to discuss the options available.

A few members have already offered copies of material they have so this is looking positive for the production of the DVD.

DESIGN THE LOGO !!

As has been customary, CMR has, in the past, produced a 'builder's plate' that has been given to the owners of locomotives registered at conventions hosted by the club. This is planned to continue for our 50th Anniversary.

To this end, I extend an invitation to all current members of Castledare to participate in a competition to design the logo that will be used as the Club logo for 2013. The logo will be used as a 'watermark' on all correspondence, on the pages of our club magazine, and hopefully, for the builders plate and a badge to commemorate the occasion. The logo will also be used on a souvenir type item specifically for the 50th.

Get your thinking hats on – it's time to start designing. Please bear in mind that your design will need to be able to be resized relatively easily to accommodate the different uses that are planned.

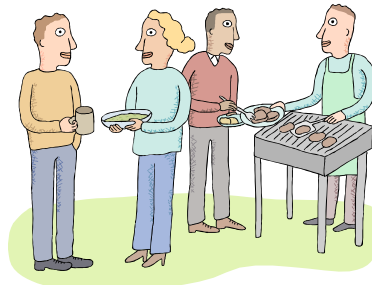
*Entries need to be received by me no later than the public run day on **3rd June 2012** and will be judged by a person who is completely independent of anyone at Castledare. The judges decision will be final. There will be a small prize for the winning entry.*

Some designs have already been received – don't miss out !!!

You only have about a couple more weeks to get YOUR design submitted !!!

Sue Belcher,
50th Anniversary Co-Ordinator

- o - o - o - o - o -



Member's Day

SUNDAY 29th April 2012

Turned out to be a less than pleasant day weatherwise but more pleasant than expected with the number of members turning up to the railway. 16 members and an additional 7 family/friends enjoyed a day of reverse running around the railway and a pleasant chat around the lunch table.

The next planned Member's Day will be July 29th – the 5th Sunday of July – put it in your diary so you can join in.

Look out for the photos elsewhere in this edition of your magazine

WORK DAYS:

As usual, there are always many and varied tasks of routine maintenance to be performed. Quite a lot is achieved by the Wednesday work crew but there is always room in the crew for more to join in.

If any members are on holidays from work, or simply want to contribute and help their club progress, don't wait for an invitation – simply turn up on a Wednesday and join the crew. All help appreciated and will benefit your club.

MEMBERSHIP MATTERS:

The membership numbers have remained fairly static this year with most members renewing and only a couple electing not to continue as a member of CMR. A former member has now decided to return to the ranks so a welcome is extended to Clive Woodward – a member many, many years ago has now rejoined.

Something I have taken the liberty of reproducing from one of the club magazines that are received on a regular basis, this is reprinted from the April edition of the Branchline – the magazine of AMRA, WA branch. The reference is to "Membership Types" and it goes like this:

Someone said that the membership of any organization is made up of four bones –

1. **Wishbones** – who spend all their time wishing someone else will do all the work.
2. **Jawbones** – who spend all their time talking, but very little else
3. **Knucklebones** – who knock everything that anybody else tries to do
4. **Backbones** – who get under the load and do all the work !!!

Hopefully, you are the No. 4 type – as we need plenty of these around the railway.

Sue Belcher

Notice Board

For Sale - **REDUCED**

71/4 Black 5 chassis, complete and working on air. Tender almost complete. Copper boiler, silver soldered by Bob Brown and pressure tested certified.

Reason for sale, failing strength and health! Buyer collects.

Can be inspected at:
4, Glenelg Way, Mandurah.
Telephone: 9582 0334. Cliff Pole

Price: \$20,000.00 (offers considered)

For Sale

HAFCO Model HM 30 vertical mill with machine vice drill chuck, boxed collect set imperial & metric, 1/2 & 3/8 draw rods with face cutters, rotating table selection end mills, etc.

Price: \$1250.00 o.n.o.

HAFCO Bandsaw – needs new blade.

Price: \$1000.00 o.n.o.

Buyer collects – view at 4, Glenelg Way, Mandurah.
Telephone: 9582 0334. Cliff Pole

MESSAGE FROM THE EDITOR

Please do not forget to notify the editor if you change your email address, or home address. This will ensure that you always receive your Cinders and Soot notification, or 'snail mail' copy.

HARD COPY C&S RECIPIENTS: If you would like to stop receiving C&S by mail and change to downloading it from the CMR website instead, please let the editor know – we are always keen to reduce the number of hard copies where possible ☺

If you wish to contribute an article to Cinders and Soot, please note that the closing date is the 15th of each month. Please send your contributions to Trish Stuart at the email address on the page 2.

Sponsors of CMR

Brian Gardiner Motors
(08) 9279 7244



DiCandilo
(08) 9356 9000



Applied Fire Technology (08) 9478 3362



Rheem Australia (08) 9351 4293



Dingo Australia (08) 9311 9811



Fireless Fire Services (08) 9371 6913

