



**CASTLEDARE
MINIATURE RAILWAYS**

W.A. (INC)
www.castledare.com.au

OCTOBER 2012

ISSUE NO: 312

Castledare Miniature Railway

P.O Box 337
Bentley, WA 6982

Patron: Dr. M. Lekias

Contact listing for CMR Management Committee members.

All information on this page ratified by Management Committee on 20th April 2012

President:

Craig Belcher - Ph: 9459 6495 Mob: 0417 984 206
Email: craig.belcher@bigpond.com

Vice President:

Chris Doody – Mob: 0498 473 119
Email: cdoodyc@gmail.com

Secretary:

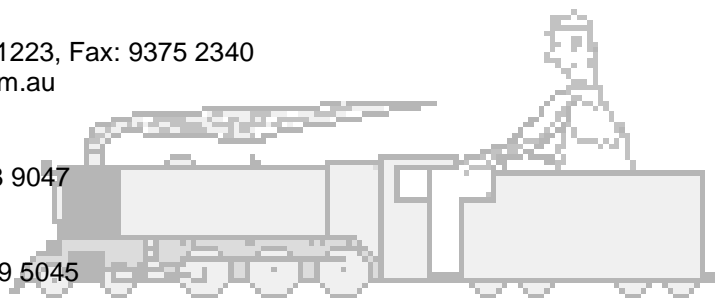
Ken Belcher - Ph: 9375 1223, Fax: 9375 2340
Email: cmr1963@tpg.com.au

Minute Secretary:

John Watson – Ph: 9458 9047

Treasurer:

Tania Watson – Ph: 9479 5045



Committee:

Les Smith – Ph: 9314 6382 Email: ausrail@box.net.au
Victor Jones - Ph: 9527 5875 Email: jones12@optusnet.com.au
Trish Stuart - Ph: 9295 2866 Email: richard.stuart@bigpond.com
Richard Stuart – Ph: 9295 2866 Email: richard.stuart@bigpond.com
Eno Gruszecki - Mob: 0408 908 028

Membership + Licenses: Sue Belcher

Boiler Inspectors:

Richard Stuart - Ph: 9295 2866
Keith Watson- Ph: 9354 2549
Phill Gibbons - Ph: 9390 4390

Qualification Examiners:

Steam Locomotives – Keith Watson, Roger Matthews
Diesel Locomotives - Roger Matthews, Craig Belcher, John Watson, Vic Jones, Eno Gruszecki
Guards & Safe working – Keith Watson, Trish Stuart, John Watson, Vic Jones, Eno Gruszecki
Signals – Mike Crean, Ric Edwards

Track Master: Craig Belcher

Editor of Cinders and Soot:

Trish Stuart – Ph: 9295 2866 (after hours) Email: richard.stuart@bigpond.com
No personal letters will be printed without committee approval

First Aid Officers: Keith Watson, Tania Watson

The Castledare Miniature Railway is sponsored by:

Coal Supplies: The steam locomotives at the Castledare Miniature Railway operate with coal supplied by Premier Coal.

Cover page: Ron Davey and Mike Crean at CMR's 49th Birthday celebrations.

Photographer: P. Stuart

The President's Bit

After a protracted time, material has been ordered to start the construction of the new boiler for Dennis P Moore. Pipe for the dome and barrel should be to hand shortly, and the plate work drawings have been finalized in readiness for plasma cutting. In the interim, Roger has commenced the process of refitting the original boiler (recently hydro tested) in order to have the locomotive operational. This will be swapped out when the new boiler is completed.

A reminder to those using club locomotives, they are there for your use, however please remember to check fuel etc before use, and when finished ensure that the battery charge cable is plugged in to each loco and the covers replaced.

Our new "Niana A Cabin" has gone through the engineering process, and is currently with the council and other authorities for their approval. I don't expect we will hear anything more on this until early November at best, though I'd be happy to be surprised. Should the approvals come through as is hoped, we will need to co-ordinate with the builder around our run days to ensure that the existing building is removed (club's responsibility) in time for site works to begin.

Members will be kept posted of progress on this as more info comes to hand.

- Rail for the next section of Tee Rail has been rolled; next step is to drill the ends for the expansion joints, in readiness for welding. A drilling jig needs to be made for this if there's anyone interested in a little bit of homework. ☺
- Many of you will remember that the club has for the past several years held a run day to contribute to the fundraising efforts of the Conductive Education Group, with their special needs children. This year they will be holding their run day on the 18th November, at Wilson Station. Additional advertising is to be done, so we can expect the day to be busier than we have come to expect of our Wilson runs.
- We have had two steel scrap bins in over the last week or so, and as a result, a much needed clean out of the material salvage racks completed, approximately 5 Tons of steel being removed.
- The Canning area is essentially ready for our summer operations. There are still some sleepers to be changed out, though these will be done progressively over the summer. The Signals team is working on 2 new signals for this area, giving 4 in total to ensure safe movements into and out of the Junction. Remember, our signaling system is evolving. There are changes being made, all aimed at making our operations safer for both us, and our travelling passengers.

My thanks to those who continue to put the effort in at the railway the continual improvement in our grounds and facilities shows each time I am at the railway.

As the editor is harassing me again, I'll leave it at that for this month. ☺

Till next month,

Craig Belcher
President, Castledare Miniature Railway



FROM THE SECRETARY'S DESK

Notes from the last Committee Meeting – these are only a brief summary of some of the items discussed.

SPECIAL NOTICE: The private booking for the Conductive Education [NACE] group is to be held on the 18th November. This will be held in conjunction with our normal Wilson run day operations – any and all assistance you can offer will help to make this a successful day.

- Reminder that General members meetings are now being held quarterly – this means the next will be December 2012
- 50th Anniversary celebration – flyer sent to all AALS clubs, advertising in the AME arranged, registration forms will be available in the next couple of months. Planning for this event is ongoing and progressing well.
- Reminder: It is important that members do not create or disturb earthworks without prior consultation with either your President or Secretary. These matters are still ongoing with the Secretary now in continuing discussions with the W A Planning Commission and further with both City of Canning and the SRT. Outcome of proposed 5 year plan for maintenance and other projects submitted to SRT in July was received and as a result of this, the appropriate application form for required permits has been lodged. Other applications will need to be lodged as and when the specific project is identified and approved by the Committee.
- Work in the picnic ground is continuing – most of the fence has been repaired. There is still more to be achieved here and the work is progressing slowly however it is subject to the approvals process.
- Committee in the process of planning meetings re the future direction of the club and its infrastructure, etc.
- Quote for construction of new signal box obtained – further quotes have now been sourced and the Committee has made a decision and agreed to proceed with this project – there are, however, still some details to be finalised and then the final planning and application process will begin. Contract for the new signal box has now been let with a deposit paid to the contractor - it has become a waiting game for appropriate approvals for relevant authorities.
- Members Christmas Function date set for December 15th 2012 – more information elsewhere in this magazine.
- A bending machine has been purchased for the club and is in the workshop.



DATES FOR THE DIARY:

Please mark these dates in your diary, with a note on the fridge or even in your mobile phone – whatever works to remind you of what is happening!!

Month	Day	Date	Event	Times	Canteen	Duty Officer
October	Sunday	21st	Public run from Wilson station	From 9.am		Trish Stuart
	Wednesday	24th	Work day	From 9am		
	Saturday	27 th	Work day	From 9am		
	Wednesday	31 st	Work day	From 9am		
November	Saturday	3rd	Prepare the railway	From 9am		
	Sunday	4 th	Public Run from Niana	From 9am	Judy Bowyer & Eddie Smith	Les Smith
	Wednesday	7 th	Work day	From 9am		
	Friday	9 th	Committee Meeting	From 5.30pm		
	Saturday	10 th	Major Work Day	From 9am		
	Sunday	11 th	Members Day	From 9am		
	Wednesday	14 th	Work Day	From 9am		
	Friday	16 th	Work Night	From 4pm		Fish & Chip evening meal provided
	Saturday	17 th	Work Day	From 9am		
	Sunday	18 th	Public Run Day from Wilson In conjunction with Conductive Education Group	From 9am		Trish Stuart
	Potentially a very busy day – all assistance appreciated					
	Wednesday	21st	Work day	From 9am		
	Saturday	24 th	Work Day	From 9am		
	Wednesday	28 th	Work Day	From 9am		

December	Saturday	1st	Prepare the railway	From 9am		
	Sunday	2 nd	Public Run from Niana	From 9am	Judy Bowyer & Kathy Watson	Les Millman
	Wednesday	5 th	Work Day	From 9am		
	Friday	7 th	Committee Meeting	From 5.30pm		
	Saturday	8 th	Private run from Wilson in the afternoon- in conjunction with City of Canning	From 11.30am ready for 12noon at Wilson		TBA
	Sunday	9 th	2 Private bookings 1 in morning and 1 in the afternoon	From 9am 1.30pm and then 2pm 5pm		
	Wednesday	12 th	Work Day	From 9am		

Castledare Gallery

◆◆◆CMR's 49th Birthday Celebration Run◆◆◆
(Photographer: P. Stuart)



CMR members & friends in the picnic ground



CMR members around the picnic table



CMR members relaxing and chatting



Mike and Ron with 4401



John Smith



Les Millman driving Phoenix



John Palm driving EM44



Sean Smith under the watchful eye of John



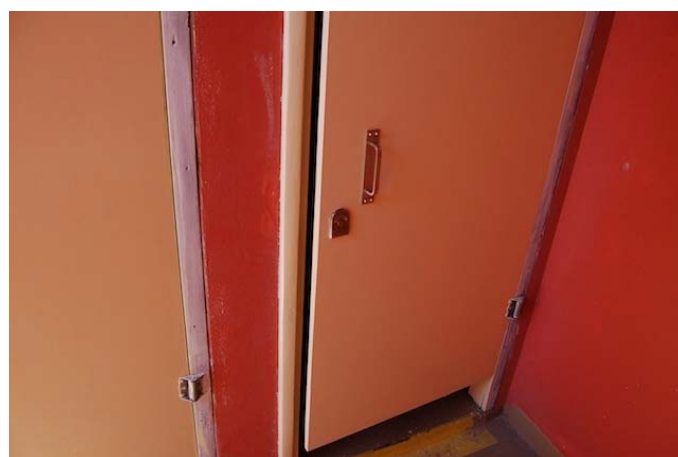
Clive Woodward driving Newman (N1)



Steve Thompson driving Elizabeth



Guests of the Thompson family enjoying a ride



New toilet doors in the 'ladies' – yay, thanks gents, and Stork for painting them ☺



And the planning continues towards October 2013 !

HAVE YOU OFFERED YOUR HELP ???

It is planned to produce a DVD depicting the club's history and this is where you, the members can assist. Do you have any photos, video, film, etc. taken over any of the previous 49 years the club has been operational? If the answer is yes, are you prepared to make a copy and allow it/them to be included in the DVD ?



Ideally, any photos, etc. should include a brief but explanatory description of the location and also, an idea of the date the image was taken. Acknowledgement will be given to the owner/s of private photos as part of the DVD.

This project can only be achieved with your help – can you and will you assist preserve the club's history ??? Obviously the more material that is made available, the better the DVD can be. If you are able to contribute, please contact me to discuss the options available.

A few members have already offered copies of material they have so this is looking positive for the production of the DVD.

Time is running out for this project – Don Bowyer would appreciate any and all material member's may have to offer. I'm sure you will all be aware that this task will require some considerable time with putting together, editing, etc. before the final product is available. The sooner material is made available the easier the work load for Don!

More information as it comes to hand.

*Sue Belcher,
50th Anniversary Co-Ordinator*

- o - o - o - o - o -

WORK DAYS:

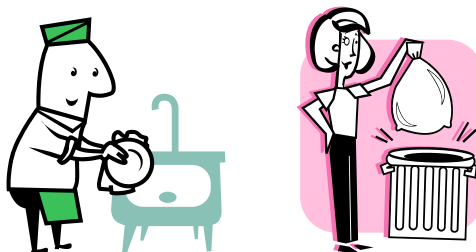
As usual, there are always many and varied tasks of routine maintenance to be performed around the club. Quite a lot is achieved by the Wednesday work crew but there is always room in the crew for more to join in. The Saturday major workdays generally have a good turn up of members and a lot of progress can be made on these days with various projects.

If you are unable to join in on a Wednesday, there is also a small band of members who are regularly at the club on a Saturday morning – don't wait for a personal invitation – it is your club, feel free to come down, participate in some routine maintenance type tasks and enjoy some social interaction with fellow members.

If any members are on holidays from work, or simply want to contribute and help their club progress, – simply turn up on a Wednesday or a Saturday morning and join the crew. All help appreciated and will benefit your club.

HOUSEKEEPING:

Just a note to **ALL** members – when utilising the facilities in the clubrooms – tea, coffee etc. – **PLEASE clean up after yourself** – other members are not there to clean up after you. If we all look after and clean up after ourselves, the clubrooms will be a much more pleasant place to visit.



MEMBERSHIP RENEWALS:

Your membership renewal will be posted [via snail mail] in the next few weeks. Please complete the form and return it, with the appropriate fee, as noted on the form. There is now the provision for members to pay their membership fee via a direct debit to the Club's bank if you wish; however you must **STILL RETURN THE COMPLETED FORM.**

Notice Board

Garden Mulcher For Sale

The machine has had little use since being purchased and is therefore in very good condition. If any members are interested it can be seen at the railway, in the compressor room. It is for sale by tender, with bids to the secretary.

Loco For Sale - (FURTHER REDUCED)

71/4 Black 5 chassis, complete and working on air. Tender almost complete. Copper boiler, silver soldered by Bob Brown and pressure tested certified.

Reason for sale, failing strength and health! Buyer collects.

Can be inspected at:
4, Glenelg Way, Mandurah.
Telephone: 9582 0334. Cliff Pole

Price: \$17,500.00 (offers considered)

MESSAGE FROM THE EDITOR

Please do not forget to notify the editor if you change your email address, or home address. This will ensure that you always receive your Cinders and Soot notification, or 'snail mail' copy.

HARD COPY C&S RECIPIENTS: If you would like to stop receiving C&S by mail and change to downloading it from the CMR website instead, please let the editor know – we are always keen to reduce the number of hard copies where possible 😊

If you wish to submit an article for inclusion in Cinders and Soot, please note that the closing date is the 15th of each month. The format should be Word, Arial font size 10.

Please send your contributions to Trish Stuart at the email address on the page 2.

Sponsors of CMR

*ADVERTISING
SPACE
FOR RENT !*

Di Candilo (08) 9279 7244



Applied Fire Technology (08) 9478 3362



Rheem Australia (08) 9351 4293



Dingo Australia (08) 9311 9811



Fireless Fire Services (08) 9371 6913

Fireless Fire Services



The Castledare Miniature Railway Members Christmas Party

This function will be held at the club grounds on Saturday December 15th commencing at approx 3pm. Those members and guests who have children, or grandchildren, up to and including the age of 12 and who will be joining in the Christmas party, please purchase a gift for Santa to give [to the value of \$15 wrapped and clearly marked with the child's name]. It is expected that the Santa special train will arrive at approx. 4.30pm.

Please advise on the form below your intention to attend and where applicable the names of any guests you are including. CMR is arranging the catering with a bbq, salads and desserts being provided at no cost to MEMBERS as per the Membership Register.

Members are welcome to invite guests to join us at a cost of \$10.00 per adult and \$5.00 per child.

Those members, and their guests, who wish to can participate in a night run with all the usual requirements in place re noise, etc.

I / We _____ will be attending the CMR Member's Christmas party on Saturday December 15th

Names:

Members -

Guests:

PLEASE RETURN THIS COMPLETED FORM TO TANIA WATSON ON OR BEFORE SUNDAY 2ND DECEMBER 2012.